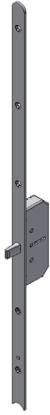


# 11350/11550/11800 Rundstulpverlängerung

## Montageanleitung

Video-Tutorial



# Glutz

Access Since 1863

### Glutz AG

Segetzstrasse 13 / 4502 Solothurn / CH  
Tel. +41 32 625 65 20  
info@glutz.com / www.glutz.com

### Glutz Deutschland GmbH

Schmalenhofer Strasse 61 / 42551 Velbert / DE  
Tel. +49 2051 8013 51-0  
info-de@glutz.com / www.glutz.com

### Glutz GmbH Österreich

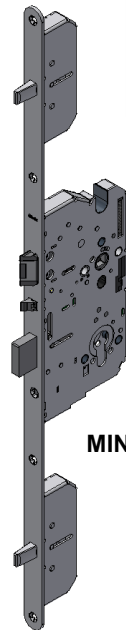
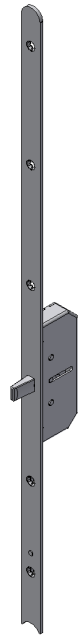
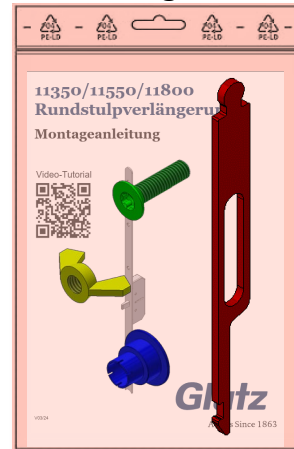
Zimbaggasse 5a / 1140 Wien / AT  
Tel. +43 7946 20506  
info-at@glutz.com / www.glutz.com

### Glutz UK Ltd.

11 Finch Drive, Springwood Industrial Estate /  
CM7 2SF Braintree / UK  
Tel. +44 1376 348 808  
info-uk@glutz.com / www.glutz.com

## 11350/11550/11800 Rundstulpverlängerung

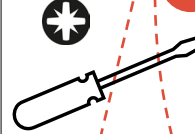
### Montageset



MINT

1

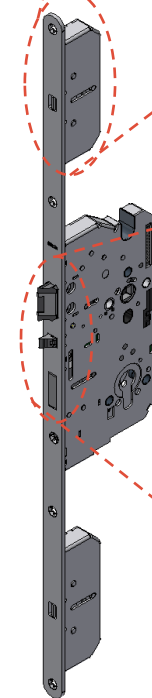
PZ2



2

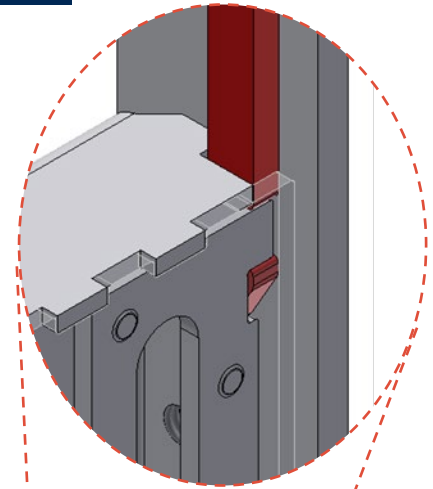


**Nur zwei Umdrehungen!**  
Deux tours seulement!  
Only two turns!



1

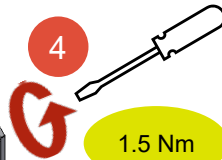
2



3

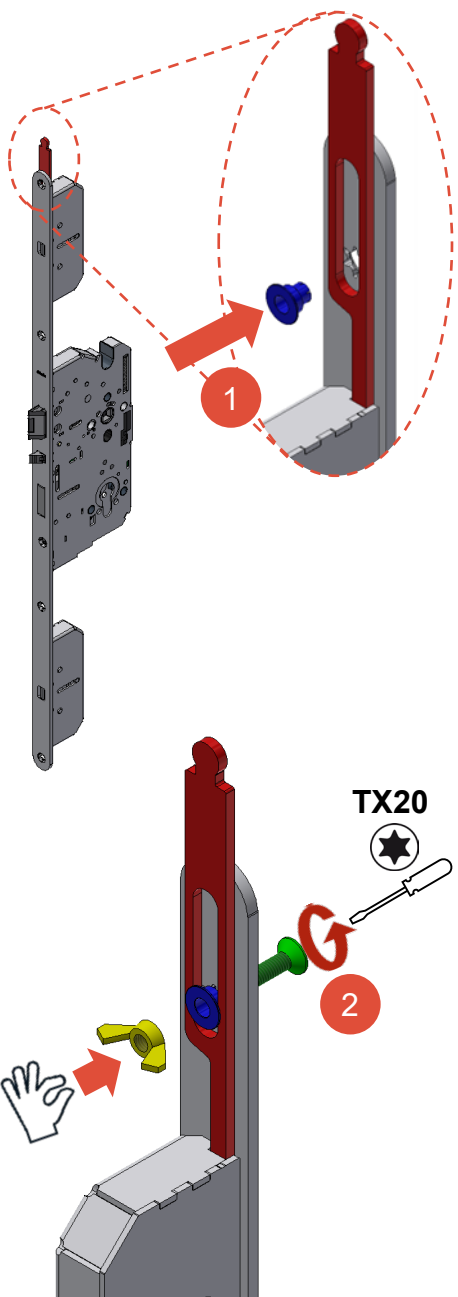


4

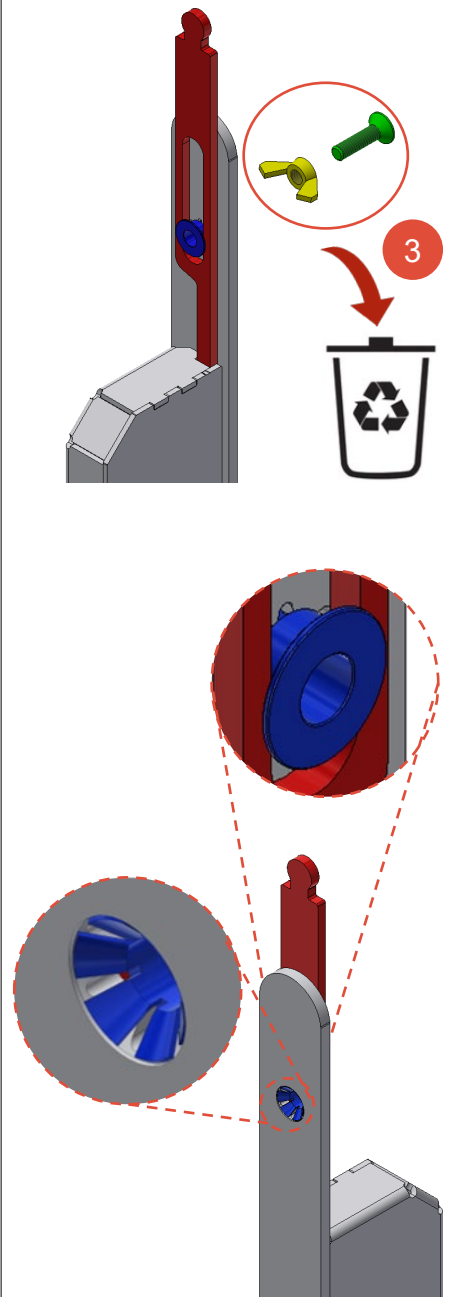


1.5 Nm

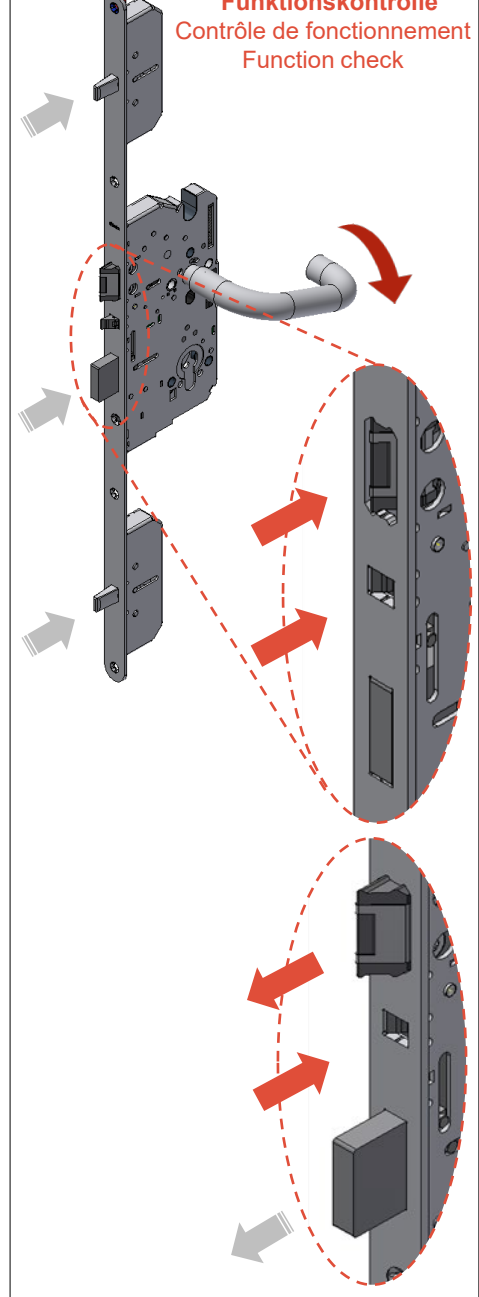
3



4



5



6

